

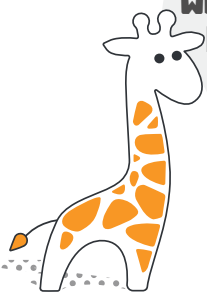


# Comparison Chart

**FIND A  
NECK  
THAT FITS YOU  
BEST**



<b>NECK LENGTHS AVAILABLE</b>	36" (91 cm) *can be cut to length if needed	15", 25", 30", 36" (38 cm, 64 cm, 76 cm, 91 cm)	15", 25", 30", 36" (38 cm, 64 cm, 76 cm, 91 cm)
<b>DRINKING TUBE INNER DIAMETER</b>	1/4" (6.4mm)	1/4" (6.4mm)	5/32" (4mm)
<b>BITE VALVE LIQUID CONTROL</b>			—
<b>CHECK VALVE LIQUID CONTROL</b>	—	—	
<b>BOTTLE HOLDER OPTIONS</b>	Aluminum Bottle Holder/ Bottle Carry Bag	Aluminum Bottle Holder	Aluminum Bottle Holder
<b>HANDS-FREE DRINKING SYSTEM</b>	—		
<b>THIS SYSTEM IS BEST FOR:</b>	Individuals with limited upper body mobility, combined with full lung and mouth function.	Individuals with full lung and mouth function, but little to no upper body mobility.	Individuals with little to no upper body mobility, and mild to moderate reduced lung function.



**We're Here  
For You!**

## THROUGH EVERY LEVEL OF HYDRATION...

Giraffe Bottles make staying hydrated simple, providing innovative designs for those who may have issues with mobility. All Giraffe Bottle Systems are designed to function without needing to be held, and are great for providing the user with independence.

We're committed to helping our users staying hydrated and healthy, implementing premium materials and intelligent design in all of our drinking systems.

